

# Theatre Timers

## Interval & Dual Timers



### Interval Timer Features

- UL Listed Under Two Categories:
  - UL 544, Medical and Dental Equipment
  - UL 863, Time Indicating and Recording
- Twelve-Hour Elapsed Time Display of
- Seconds, Minutes, and Hours
- 12 Inch Dial With:
  - Red Hour and Second Hand
  - Black Minute Hand
  - Black Markers and Seconds Numerals
  - Red Inner Ring Numerals for Minutes and Hours
- Requires 6311-9502 Timer Control Featuring:
  - Red Timer-On LED
  - Yellow Reset Mode LED
  - Instant Hand Stop
  - Mounts on Two-Gang Switch Box (not supplied)
  - Dimensions 114 x 115 mm
- Surface or Semi-Flush Mounting
- High Impact ABS Case with Shatterproof Acrylic Lens

### Dual Theatre Timer Features

- Flush Mount - Stainless steel case with Shatterproof Acrylic Lens.
- Simplex, UL listed, Interval Timer & controller
- 0057 series Sync. Wired clock – 1 & 12 Hourly correction facility



### Applications

Simplex model 6311 theatre timers are for use in hospital delivery rooms, operating rooms, laboratories, schools, industrial applications, The dual theatre timer is designed to keep track of VITAL timed events through out an operation by providing surgeons & support staff with both interval time and accurate referenced and "real time" via Simplex 0057 series slave clock. This system is housed within a "air tight" sealed stainless steel cabinet complete with shatter proof acrylic enclosure.

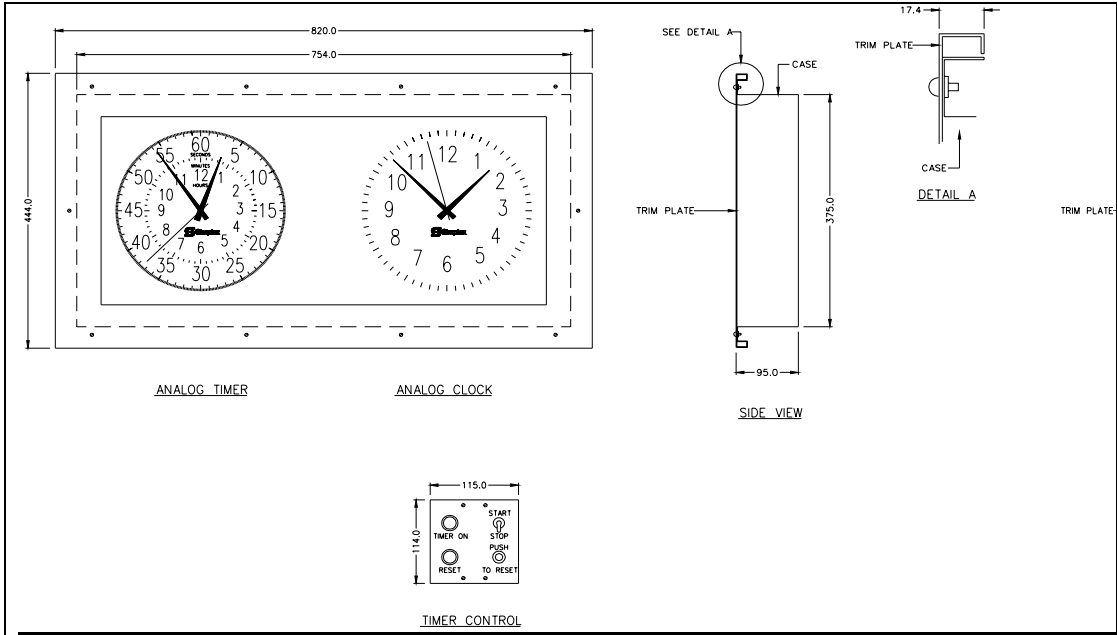
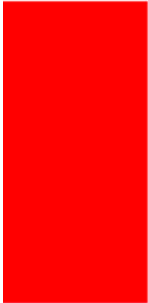
### Operation

Manual operation from a 6311-9502 timer control is started by switch activation (START) which is indicated by the red timer-on LED. If the timing sequence must be stopped, the STOP position will instantly stop the hands without coasting due to a "dead-stop" motor control feature. Reset is activated by pushbutton, if the control switch is in the STOP/RESET position.

### Contact Us

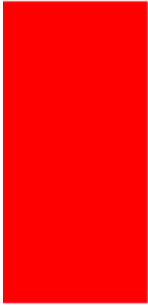
Phone: 13 14 91  
Email: [simplextime.au@tycoint.com](mailto:simplextime.au@tycoint.com)  
Website: [www.simplextime.com.au](http://www.simplextime.com.au)

A **tyco** COMPANY

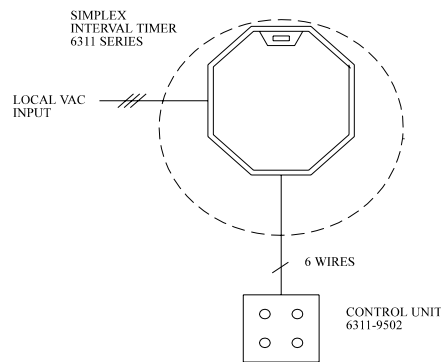


**Dual Theatre Timer (6311-1234)  
Control Panel (6331-9502)  
Single Interval Timer**

**Contact Us**  
Phone: 13 14 91  
Email: [simplextime.au@tycoint.com](mailto:simplextime.au@tycoint.com)  
Website: [www.simplextime.com.au](http://www.simplextime.com.au)



Front View



SEMI-FLUSH MOUNTING

Specifications

- Voltage: 20VAC, 60Hz  
40VAC, 50Hz
- Power: VA max.
- Reset Time: 45s min., 96s max.
- Case Colour: Light Grey

Single Theatre Timer (6311-9034)  
Control Panel (6331-9502)

Contact Us

Phone: 13 14 91  
Email: [simplextime.au@tycoint.com](mailto:simplextime.au@tycoint.com)  
Website: [www.simplextime.com.au](http://www.simplextime.com.au)